

**Product Range for the SEMI as well as MEMS industry**

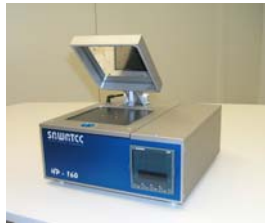


## Manual loaded processing systems for Universities, Research Labs and Pilotproductions

**Hotplate** designed for the clean room with exhaust connector available as table top or bench mounted



HP 150, up to 6"



HP 160, up to 6"

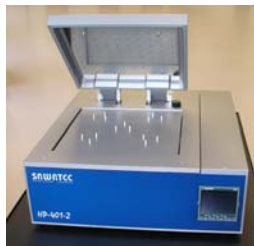


HP 401-250, up to 300 mm

**Hotplate/Coolplate** designed for the clean room with exhaust connector available as table top or bench mounted



HP 200-250HMDS; up to 8"



HP 401-Z; up to 300 mm



HP 300-Z; up to 300 mm

**Spray Developer** designed for the clean room with exhaust connector available as cabinet version or bench mounted



LRD 250stainless; up to 8"

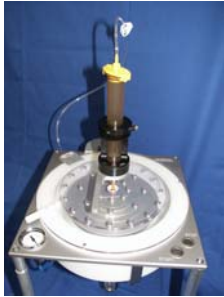


LRD 250PP; up to 8"



LRD 3

**Spin Coater** designed for the clean room with exhaust connector available as bench top, bench mounted or cabinet version



SM 180BM; up to 6" S



M 180BT; up to 6"



LSM 200; up to 6"



LSM 250; up to 8"



LSM 300; up to 300 mm



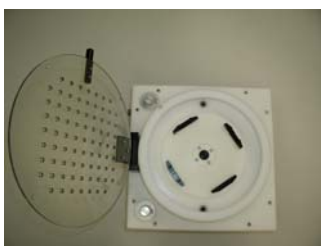
LSM 600; up to 600 mm

**Spray Coater** designed for the clean room with exhaust connector available as bench mounted or cabinet version



SB 150HC; up to 6"

**Drying Spinner** available as bench mounted or bench top version



TS 5; up to 6"

## Dispense pumps for resist as well as solvent applications

### Pressure/vacuum driven membrane dispense pumps

designed for resist as well as solvent coatings in the SEMI industry



SP-177; 12ml, <800cps



SP-50; 50ml, <800cps



DP-100; 100ml, <800cps



SPV-15, 15ml, <10'000cps

### Steppermotor driven volume controlled membrane dispense pumps

designed for resist as well as solvent coatings in the SEMI industry



GSP-98G; 5 ml, <800cps



VPV-20, 20ml, <50'000cps

### Components designed for the SEMI industry



RV-60 suck back valve



RV-151 suck back valve



SV-10 check valve



DV-257 dosing valve



SN-20 spray nozzle



DV-257SC spray nozzle

# SAWATEC Solutions AG

Bruel 13, FL-9496 Balzers, Principality of Liechtenstein, <http://www.sawatecsolutions.com>  
Tel. +423-384 2652, Fax +423-384 3052, Email: [info@sawatecsolutions.com](mailto:info@sawatecsolutions.com)